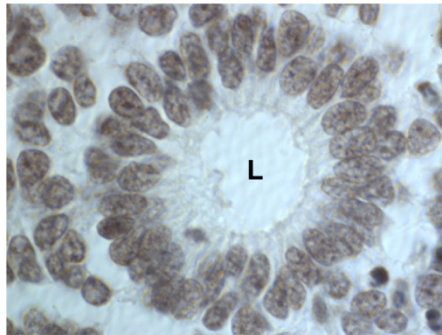


**Supplementary Figure 1** ICAM-1 immunoreactivity in paraffin embedded human retinoblastoma tissue. Nuclear staining is present in retinoblastoma cells arranged in a rosette. Note the lack of ICAM-1 staining in the cytoplasmic extensions of cells lining the lumen (L) of the rosette.



## Hayes and Seigel/ICEM-1 Expression in Benign and Malignant Human Tissues

**Supplementary Table 1** Number of tissue cores analyzed per tissue/tumor type

---

Primary Malignancies

Brain-5	Colon-3	Lung-6	Testes-3	Fibrous Tissue- 2
Lip-1	Rectum-3	Cervix-3	Kidney-3	Skin- 3
Cheek-1	Pancreas-3	Uterus-3	Bladder-2	Leukemia- 10
Tongue-3	Thyroid-3	Ovary-3	Epiploon-2	Retinoblastoma- 10
Esophagus-3	Nose-2	Breast-3	Mesentery-1	Nephroblastoma- 20
Small Intestine-3	Throat-2	Spleen-3	Bone-3	Neuroblastoma- 20
Stomach-3	Larynx-2	Lymph node-4	Cartilage-3	
Liver-3	Pharynx-1	Prostate-2	Fatty Tissue- 1	

Metastatic Malignancies (From)

Esophagus-4	Colon-4	Thyroid-4	Endometrium-4	Kidney-4
Small Intestine-1	Rectum-3	Larynx-4	Ovary-8	Bladder-4
Duodenum-3	Liver-2	Lung-8	Breast-4	Skin-5
Stomach-3	Pancreas-4	Cervix-3	Prostate-2	

Normal Tissue

Cerebrum-3	Liver-3	Adrenal gland-3	Breast-2	Kidney-3
Cerebellum-3	Colon-2	Larynx-1	Spleen-3	Heart-3
Nerve-3	Pancreas-3	Lung-3	Tonsil-3	Bone marrow-3
Salivary gland-2	Thyroid-2	Cervix-3	Thymus-3	Striated muscle-2
Esophagus-3	Parathyroid- 3	Uterus-2	Prostate-2	Mesothelium-2
Small intestine-2	Pituitary-3	Ovary-2	Testes-3	

---